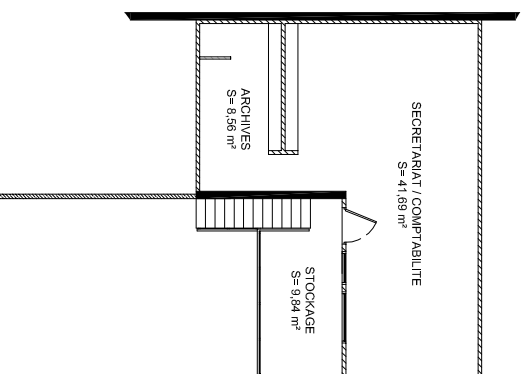
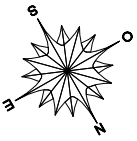


**SOCIETE SEMA**  
 Lots 30 - 32, lotissement INDUSTRIEL, Section de DUCOS  
 Inv. cadastral 648539-7533 (30) - 648539-7520 (32)  
 Commune de NOUMEA

Surface HORS OEUVRE RDC	1070,56 m <sup>2</sup>
Surface HORS OEUVRE ETAGE	67,09 m <sup>2</sup>
Surface HORS OEUVRE TOTALE	1137,65 m <sup>2</sup>
Surface TOTALE UTILE	997,08 m <sup>2</sup>



**PLAN DE DISTRIBUTION - ETAGE**  
 (Echelle 1 / 200)