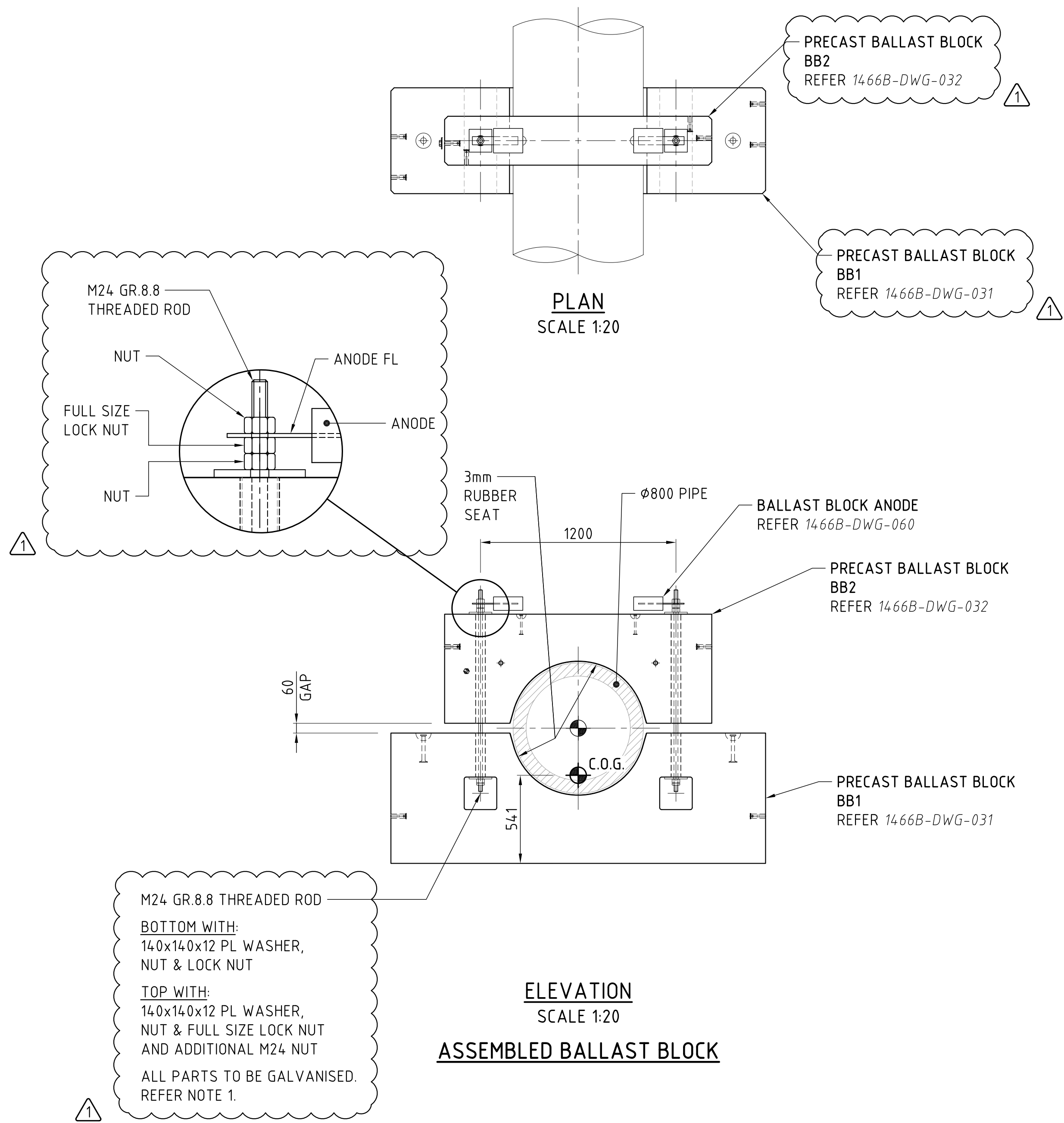


- NOTES:
1. M24 GR.8.8 THREADED ROD SHALL BE TENSIONED TO ACHIEVE A RESIDUAL FORCE OF 60kN.



**COPYRIGHT** All rights reserved

These drawings, plans and specifications and the copyright therein are the properties of Madsen Giersing Pty. Ltd. and must not be used, reproduced or copied wholly or in part without written permission of Madsen Giersing Pty. Ltd.

**FOR CONSTRUCTION**

**DOCUMENT CONTROL STATUS**

UNLESS STAMPED OTHERWISE IN RED THIS DRAWING IS UNCONTROLLED AND MUST BE VERIFIED AGAINST A CONTROLLED COPY OF THE DRAWING PRIOR TO USE TO ENSURE IT IS THE CURRENT ISSUE.

REV.	BY	DATE	APPROVED FOR CONSTRUCTION DRAWING HISTORY	CKD	APP	REV.	BY	DATE	PRE-CONSTRUCTION DRAWING HISTORY	CKD	APP
1	DJG	04.03.15	ISSUED FOR CONSTRUCTION	DAW	L.P.M.						
0	MJB	02.03.15	ISSUED FOR CONSTRUCTION	DAW	L.P.M.						

CLIENT

**Canstruct.**  
Construction Solutions.

**Madsen Giersing**  
CONSULTING ENGINEERS  
Excellence in marine structural design  
ABN 76 010 769 909

Postal address  
Suite 4.1 Modular  
4 Kyabra Street  
Newstead Qld Australia 4006  
[www.madsengiersing.com.au](http://www.madsengiersing.com.au)  
[mgce@madsengiersing.com.au](mailto:mgce@madsengiersing.com.au)

Phone (617) 3606 6200  
Fax (617) 3606 6280

FILE NAME  
**1466B-DWG-030.dwg**

DRAWN: DJG	PROJECT: GORO OCEAN OUTFALL UPGRADE & REPAIR PROJECT
CHECKED: LPM	TITLE: BALLAST BLOCK ASSEMBLY
DESIGNED: LPM	DWG. SIZE: A1
APP. FOR CONSTRUCTION:	SCALE: AS SHOWN
CLIENT APPROVED:	JOB No.: 1466B
	DRAWING No.: 1466B-DWG-030
	REV.: 1